

To test you communication port

edplc.com

1 Install the Communication Drives to your computer

USB Driver 32 Bit or USB Driver 64Bit according to your computer operating system
Windows XP, Vista, Windows 7, Window 8, Windows 10

2 Connect the USB Interface to the PLC and PC

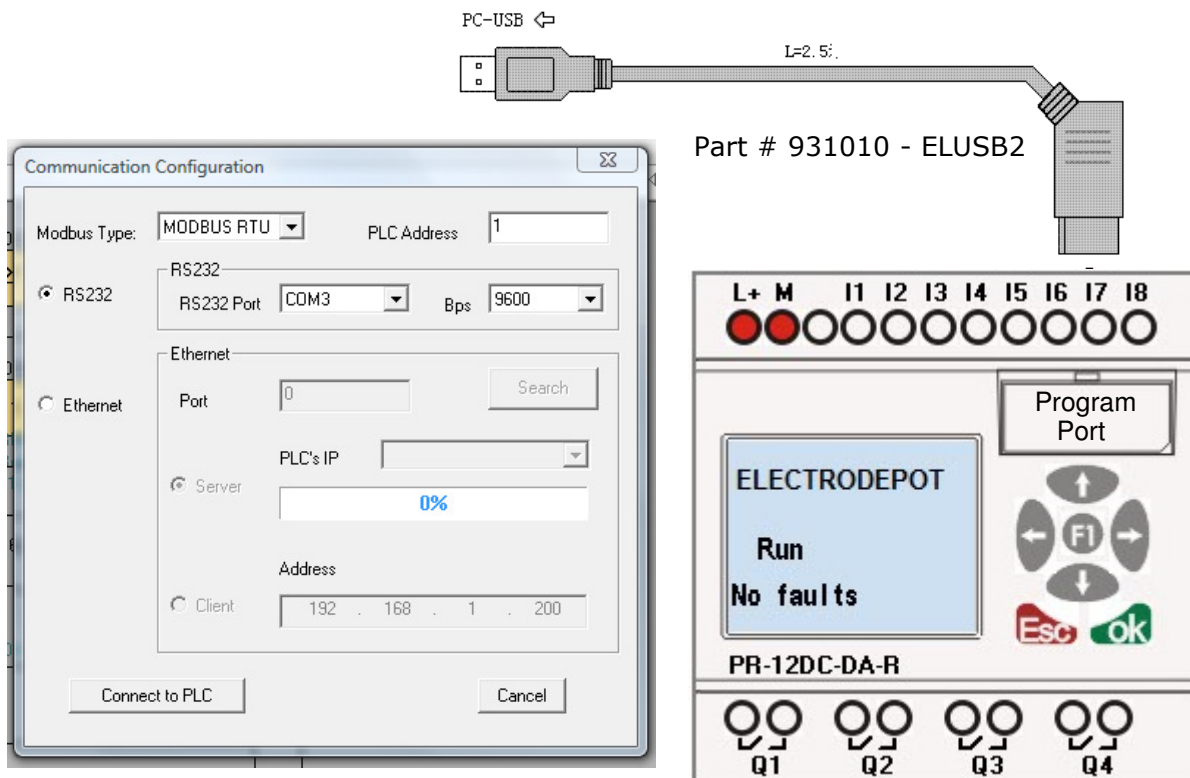
Apply Power to the Controller (Power-up the PLC)

Open the Xlogic software with your new program

3 Select Hardware to sync with the program

On the Menu Select **Tools**, Click on **Select Hardware**

From the Info chart select the **PLC model** you are using click **OK** and then **Save**



1 On the Menu Select **Tools**, Select **Configuration**

The Communication Configuration charts opens

2 For USB check the RS232 Select a free Com Port available on your computer; COM3, COM4.. COM10

3 Click on **Connect to PLC**

4 VERIFY YOUR CONNECTION to the Selected Port

5 To do so On the Menu Select **Tools**, go to **Transfer**

6 Click on **Get PLC Version**, it takes 40 seconds

It will display the ELC version # and Hardware version #

8 Now your PLC and PC are ready for uploads or downloads.

To upload: Select **Tools**, **Configuration** then **Transfer PC->PLC**

9 If the Communication Port is not valid or busy, "ERR: Communication Failed"

Select **Tools**, Click on **Disconnect Line**

10 Repeat Step 1 to 4 and select another Port; COM3, COM4, COM6

until your get your available free USB port from your computer.

11 **Verify the communication** as indicated from step 5 to 10.

12 If you can not connect to any port of your computer, check the System Device Manager of your PC to select the available USB's, or contact the PC manufacturer.